



**Putzmeister**



# Spare parts

Spare parts for truck mixers

## We offer you:

- Spare parts for all makes of truck mixers
- Customer service and repairs
- Spare drums with installation on request

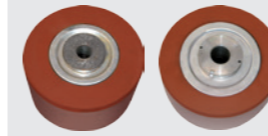
## Options for spare drums:

- Primed or with individual varnishing
- With additional end helix sheets
- Helix sets
- Size from 6 m<sup>3</sup> to 16 m<sup>3</sup>

We are happy to prepare an offer for you!



## Load-bearing roller



Load-bearing roller	Article no.
6 m <sup>3</sup> LH	1-17-001
9 m <sup>3</sup> LH	5-17-001



Load-bearing roller	Article no.
IMI 6-8C	6-17-001
IMI 8-12	9-17-001
ST 8-10 m <sup>3</sup>	9-17-150

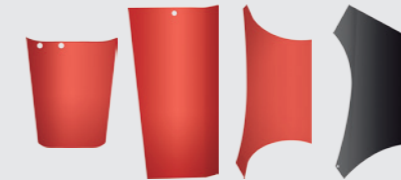


Load-bearing roller	Article no.
with scales on the right	6-17-030
with scales on the left	6-17-040

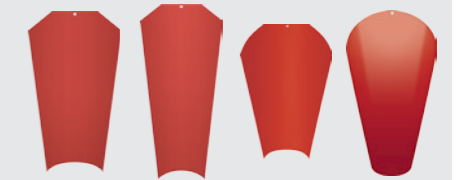
## Wear-resistant plate



Wear-resistant plate	Article no.
for hopper body IMI curved	6-09-002
for hopper body ST/LH	6-09-001
for hopper body IMI straight	6-09-006
<b>Rubber</b> for hopper body	6-09-011



Wear-resistant plate	Article no.
for discharge tray IM/ST	6-07-002
for discharge tray IMI	6-07-102
for discharge tray ST C	6-07-302
for discharge tray LH	1-07-002

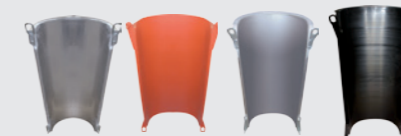


Wear-resistant plate	Article no.
for chute IM/ST L=1250	6-13-001
for chute IMI/ST L=1450	6-13-111
for chute LH L=1230	1-13-001
for chute LH-N-L=1300	1-13-010

## Extension channel



Extension channel	Article no.
1 m Steel IM/IMI	6-20-022
1 m Steel ST	6-20-000
1 m plastic IMI/ST	6-20-060
Plastic channel inset for 60-20-060	6-20-050



Extension channel	Article no.
1 m aluminium IMI/ST LH	6-20-100
1 m aluminium LH	1-20-100
1 m plastic LH	1-20-060

## Rubber apron



Rubber apron	Article no.
Discharge tray IM/ST	6-07-011
closed IMI	6-07-030
<b>Hose clip</b> for rubber apron IMI	66-22-360

# Spare parts for truck mixers

## Draw hook



Draw hook	Article no.
complete IMI	6-21-066
complete ST	6-21-006
complete LH	1-21-006
<b>Tension spring</b>	6-21-025

## Channel coating



Channel coating	Article no.
IMI	6-21-010
ST	6-21-008
LH	1-21-008

## Crank chute support



Crank chute support	Article no.
IM/ST B = 30	6-16-000
IMI B = 50	6-16-600
LH B = 60	1-16-000
<b>Rubber handle</b>	6-21-017

## Four stage rotary switch



Four stage rotary switch	Article no.
MB	6-26-015
MB	6-26-021
MB Actors K&N	6-26-022
MB Actros KlöMö	6-26-050

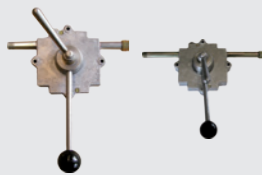
Four stage rotary switch	Article no.
MAN	6-26-014
MAN (Klö-Mö)	6-26-051
MAN K&N neu	6-26-052

## Spray nozzle



Spray nozzle	Article no.
R3/4"	6-22-123
Spray nozzle	6-22-121
<b>Water hose 19 x 4</b>	6-22-071

## Single gear rack transmitter



Single gear rack transmitter	Article no.
Hub 70,0 MF	6-25-058
Hub 110 MF	6-25-190

## Double gear rack transmitter



Double gear rack transmitter	Article no.
MF 70/70 MF	6-25-006
70/110 MF	6-25-027
2 x Hub 70/110 MF	6-25-083

## Gear rack transmitter acces.



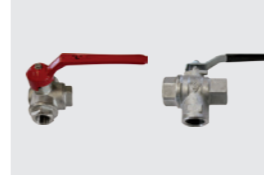
Accessories	Article no.
<b>Simple transmitter box</b>	
Driver's cab Hub 70 MF	6-25-410
Driver's cab retainer bracket	6-25-280

## Accessories



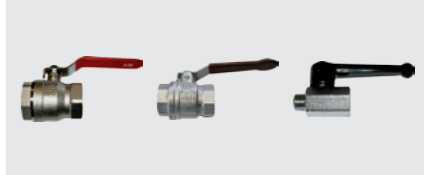
Accessories	Article no.
Fixed coupling GK	6-22-252
Hose joints	6-22-205

## Three way valve



Three way valve	Article no.
Connecting nipple 1/2"	6-22-300
1/2" LH	6-22-239

## Ball valve



Ball valve	Article no.
1 1/2" IG/IG	6-29-001
1" IG/IG	6-22-022
1/4" AG/IG „Mini“	6-22-238

## Remote control



Remote control	Article no.
L = 5.000 mm Hub 70 IMI/ST	6-25-050
L = 6.000 mm Hub 70 IMI/ST	6-25-060
L = 8.000 mm Hub 70 IMI/ST	6-25-081
Other lengths on request.	



Remote control	Article no.
L = 5.000 mm Hub 110 LH	6-25-069
L = 6.000 mm Hub 110 LH	6-25-067
L = 8.000 mm Hub 110 LH	6-25-072
Other lengths on request.	



Remote control	Article no.
FH 1.100 mm ZG coupling	6-25-401
FH 1.620 mm pump/coupling	6-25-403

## Ball valve



Ball valve	Article no.
1 1/2" IG/IG rep.	6-29-021
1" IG/AG with drain 1/4" rep.	6-29-022
3/4" IG/AG rep.	6-22-501



Ball valve	Article no.
1 1/2"	6-29-023
1"	6-22-233
3/4"	6-22-232

## Water meter



Water meter	Article no.
500 l	6-22-713
1.000 l	6-22-714
<b>Screw connection for water meter 2"</b>	6-22-712
<b>Water hose 32 x 6</b>	6-22-012



#### **Central Services Aichtal**

Putzmeister Concrete Pumps GmbH  
Max-Eyth-Straße 10 · 72631 Aichtal  
Tel. +49 (7127) 599-0 · Fax +49 (7127) 599-520  
pmw@pmw.de · www.putzmeister.de

#### **Putzmeister Service Center Berlin**

Putzmeister Concrete Pumps GmbH  
Kiesweg 4-5 · 16348 Wandlitz  
Tel. +49 (33397) 778-0 · Fax +49 (33397) 778-24  
Notfall +49 172 713 95 33  
nl-berlin@pmw.de · www.putzmeister.de

#### **Putzmeister Service Center Essen**

Putzmeister Concrete Pumps GmbH  
Im Teelbruch 89 · 45219 Essen - Kettwig  
Tel. +49 (2054) 9512-0 · Fax +49 (2054) 9512-14  
Notfall +49 173 307 83 62  
pmw@pmw.de · www.putzmeister.de

#### **Putzmeister Service Center Frankfurt**

Putzmeister Concrete Pumps GmbH  
Industriestraße 10 · 63584 Gründau Rothenbergen  
Tel. +49 (6051) 4805-800 · Fax +49 (6051) 4805-850  
pmw@pmw.de · www.putzmeister.de

#### **Branch Gera**

Putzmeister Concrete Pumps GmbH  
Wiesenring 15 · 07554 Korbußen  
Tel. +49 (36602) 324-0 (24-Stunden Service)  
Fax +49 (36602) 324-25  
nl-gera@pmw.de · www.putzmeister.de

#### **Putzmeister Service Center Hamburg**

Putzmeister Concrete Pumps GmbH  
Bei den Kämpfen 13 · 21220 Seevetal  
Tel. +49 (4185) 7938-0 · Fax +49 (4185) 3682  
Notfall +49 (4185) 7938-12  
nl-hamburg@pmw.de · www.putzmeister.de

#### **Putzmeister Service Center München**

Putzmeister Concrete Pumps GmbH  
Kirchhoffstraße 10 · 85386 Eching  
Tel. +49 (8165) 9599-0 · Fax +49 (8165) 9599-30  
Notfall +49 8165 9599-24  
nl-muenchen@pmw.de · www.putzmeister.de

#### **Intermix-Putzmeister Fahrmischer**

Grüntenenstraße 1 · 87751 Heimertingen  
Tel. +49 (8335) 98 28-0 · Fax +49 (8331) 98 28-30  
info@intermix.de · www.intermix.de

